

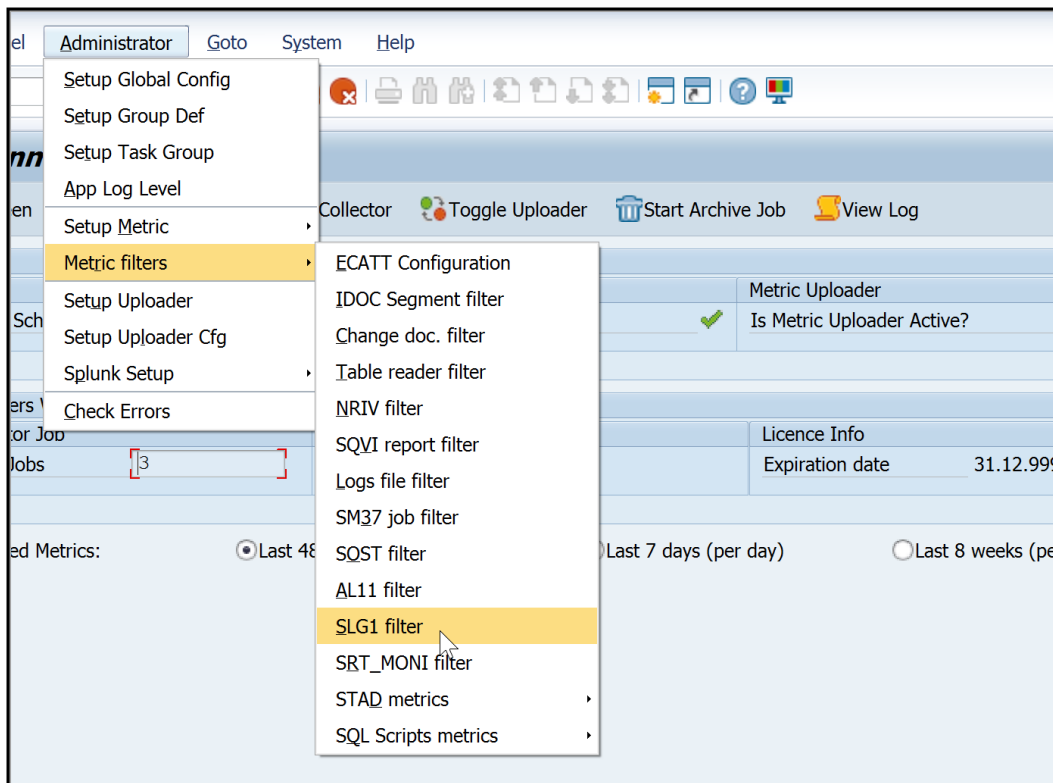
SLG1 configuration for SP10

Since SLG1 can create a large amount of metrics we have introduced a filter so you can be selective on the data you collect.

Even if you want to collect all the logs you are required to configure the filter to collect metrics. This would involve using an “*” in the fields to indicate you want to collect all date. If the filter is not configured no metrics will be collected.

Once SLG1 is activated in the Group Definition (Administrator → Setup Group Def) you need to configure the SLG1 filter before metrics are collected.

Go to Administrator → Metric filters → SLG1 filter



Use the “New Entries” button to configure the filter

To collect all SLG1 events you can use the “*” in the fields

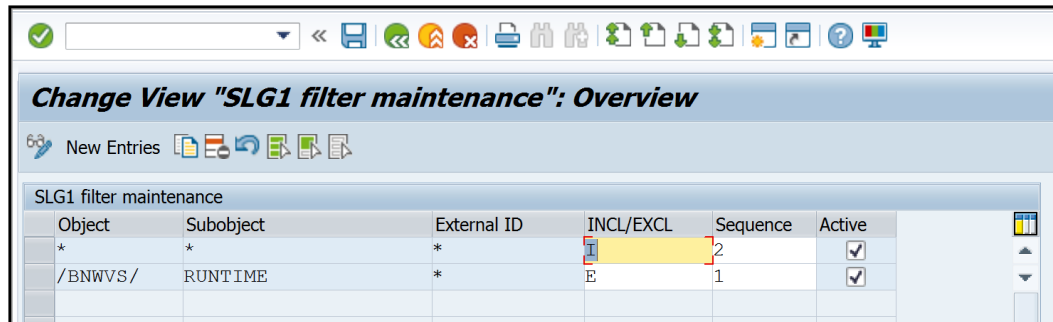
Object = *

Sbuobject = *

INCL/EXCL = I (Include)

Sequence can be left blank if only entry

Select Active.



Object	Subobject	External ID	INCL/EXCL	Sequence	Active
*	*	*	I	2	<input checked="" type="checkbox"/>
/BNWVS/	RUNTIME	*	E	1	<input checked="" type="checkbox"/>

If you want to exclude specific logs you use the “E” in the INCL/EXCL field and specify the Object and/or Subobject information you want to exclude and make it active.

Exclusion entries should occur before Inclusion – use the Sequence field to order your entries, so all exclusions have a lower number than your inclusions.