



PowerConnect System Copy Guide

KB

8/01/2020

BNW Consulting Pty Ltd

Level 2 Riverside Quay

1 Southbank Boulevard

Southbank 3006 Australia PO Box 5158

Burnley 3121 Australia

www.bnwconsulting.com

info@bnwconsulting.com Telephone +61 3 9982 4533

Fax +61 3 8677 9138

LinkedIn [bnwconsulting](#)

Twitter [bnw_consulting](#)

Please follow the steps below as part of pre and post processing of your system copy to setup the PowerConnect (PC)

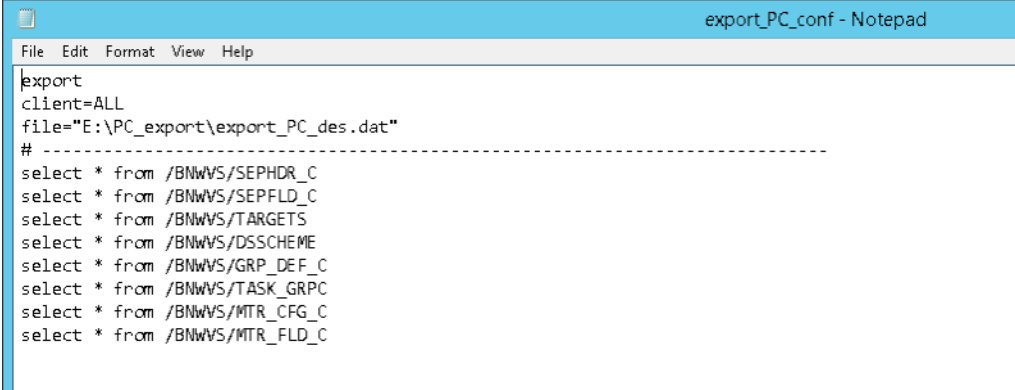
Before system copy

To preserve existing PC configuration, export out the PC tables:

1) Prepare export and delete scripts (note: delete scripts will be used later)

a) Export script - create a text file with the following contents:

```
export
client=ALL
file="<export directory/export_PC_des.dat"
# -----
select * from "/BNWVS/SEPHDR_C"
select * from "/BNWVS/SEPFLD_C"
select * from "/BNWVS/TARGETS"
select * from "/BNWVS/DSSSCHEME"
select * from "/BNWVS/GRP_DEF_C"
select * from "/BNWVS/TASK_GRP_C"
select * from "/BNWVS/MTR_CFG_C"
select * from "/BNWVS/MTR_FLD_C"
```



```
export
client=ALL
file="E:\PC_export\export_PC_des.dat"
# -----
select * from /BNWVS/SEPHDR_C
select * from /BNWVS/SEPFLD_C
select * from /BNWVS/TARGETS
select * from /BNWVS/DSSSCHEME
select * from /BNWVS/GRP_DEF_C
select * from /BNWVS/TASK_GRP_C
select * from /BNWVS/MTR_CFG_C
select * from /BNWVS/MTR_FLD_C
```

b) Delete script - create a text file with the following contents:

```
remove
client=ALL
# -----
select * from /BNWVS/SEPHDR_C
select * from /BNWVS/SEPFLD_C
select * from /BNWVS/TARGETS
select * from /BNWVS/DSSSCHEME
select * from /BNWVS/GRP_DEF_C
select * from /BNWVS/TASK_GRP_C
select * from /BNWVS/MTR_CFG_C
select * from /BNWVS/MTR_FLD_C
```

```

delete_PC_conf - Notepad
File Edit Format View Help
remove
client=ALL
# -----
select * from /BNWVS/SEPHDR_C
select * from /BNWVS/SEPFLD_C
select * from /BNWVS/TARGETS
select * from /BNWVS/DSSCHEME
select * from /BNWVS/GRP_DEF_C
select * from /BNWVS/TASK_GRP_C
select * from /BNWVS/MTR_CFG_C
select * from /BNWVS/MTR_FLD_C

```

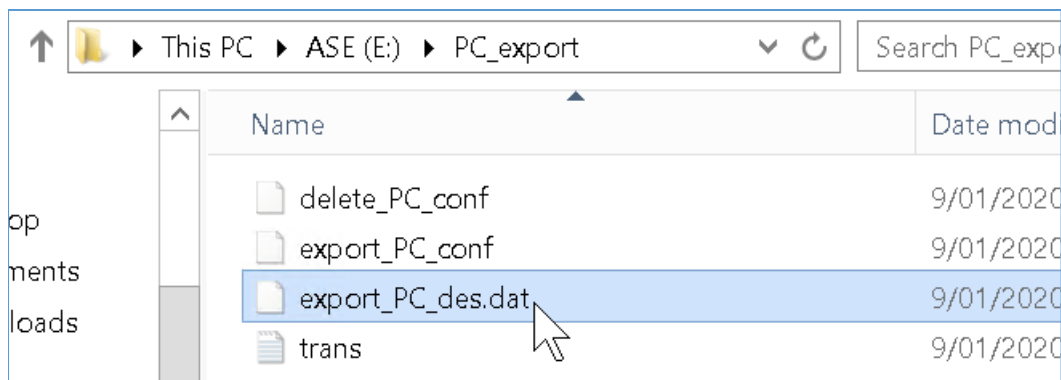
2) Run export command to export it into a file

R3trans export_PC_conf

```

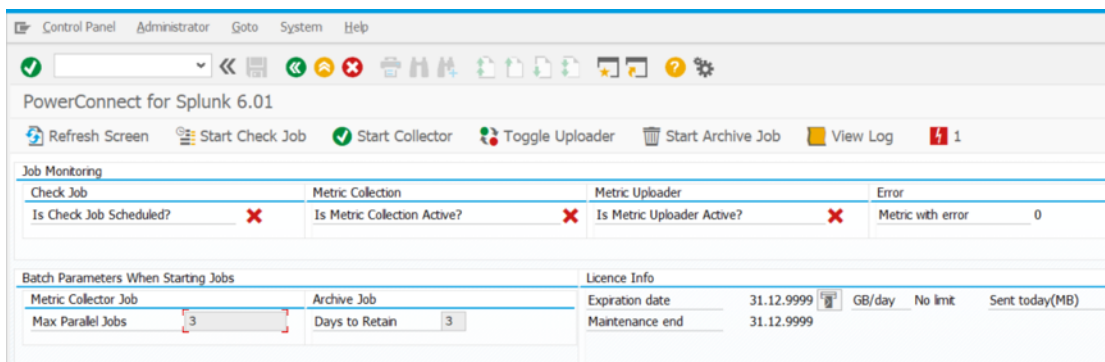
E:\PC_export>c:
C:\Users\a75adm>cd /d E:\PC_export
E:\PC_export>R3trans export_PC_conf
This is R3trans version 6.25 (release 745 - 04.09.15 - 20:15:09).
unicode enabled version
R3trans finished (0000).
E:\PC_export>_

```



After system copy

- 1) Ensure all PC jobs are stopped



- 2) Delete existing PC configurations which are being system copied over

```
R3trans delete_PC_conf
```

```
E:\PC_export>R3trans delete_PC_conf
This is R3trans version 6.25 (release 745 - 04.09.15 - 20:15:09).
unicode enabled version
R3trans finished (0000).
```

- 3) Run import command to import back the config created from earlier step

```
R3trans -i export_PC_des.dat
```

```
E:\PC_export>R3trans -i export_PC_des.dat
This is R3trans version 6.25 (release 745 - 04.09.15 - 20:15:09).
unicode enabled version
R3trans finished (0004).
```

- 4) Restart all PC jobs

