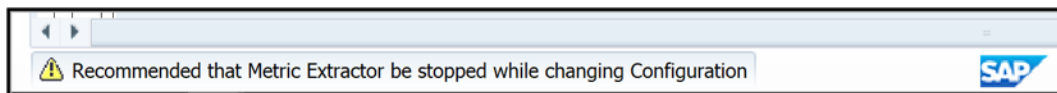
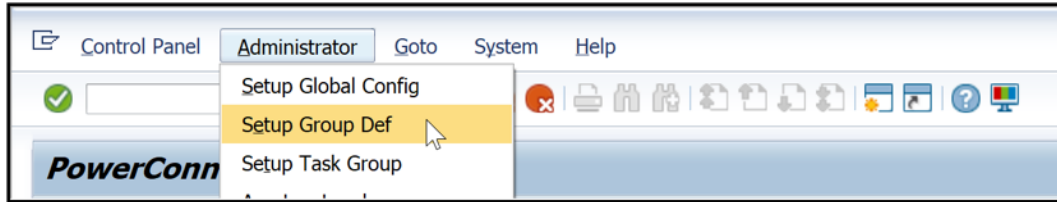


In the later versions of PowerConnect a filter for the SLG1 metric has been introduced.

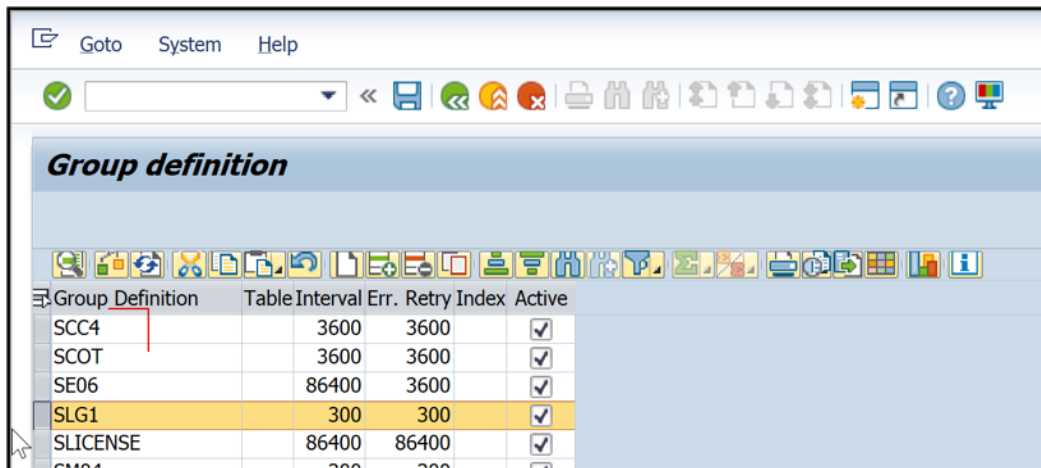
The SLG1 logs can be quite large, so we have introduced a filter to be able to exclude some logs that were not required in Splunk.

However it is necessary to place a default entry into the filter so metrics are collected.



Hit "Enter" key again

Confirm SLG1 is active

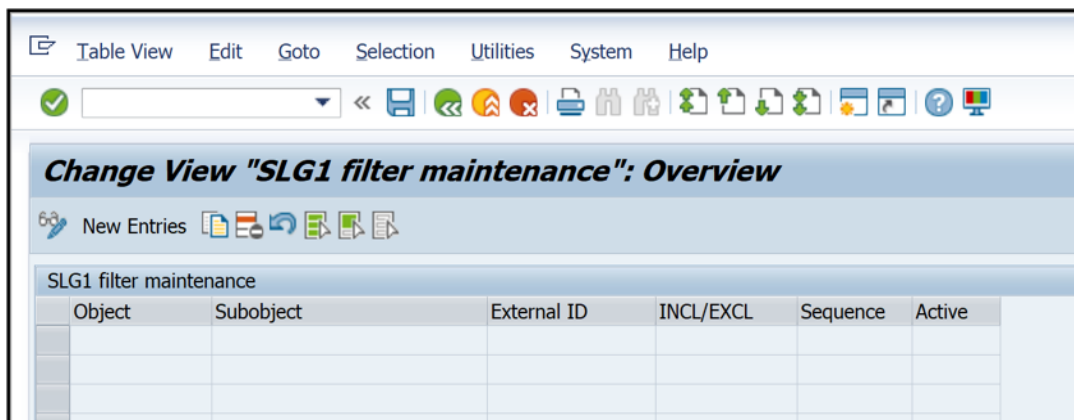
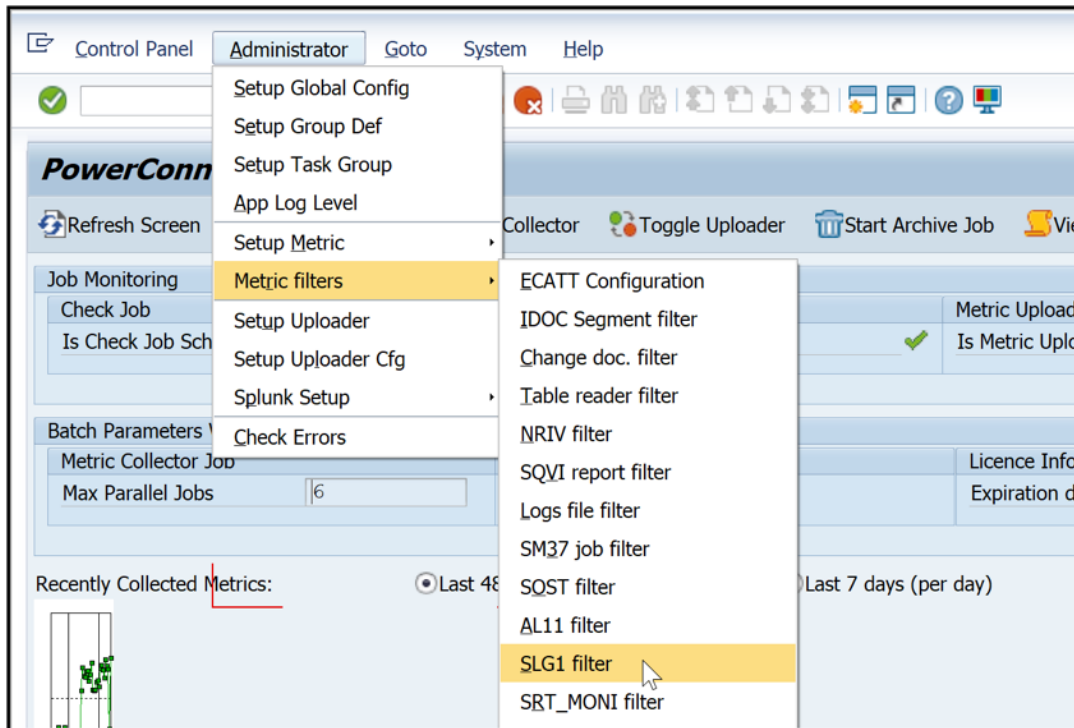


A screenshot of the 'Group definition' table in the PowerConn interface. The table has columns: Group Definition, Table Interval, Err., Retry Index, and Active. The 'SLG1' row is highlighted in yellow.

Group Definition	Table Interval	Err.	Retry Index	Active
SCC4		3600	3600	<input checked="" type="checkbox"/>
SCOT		3600	3600	<input checked="" type="checkbox"/>
SE06		86400	3600	<input checked="" type="checkbox"/>
SLG1		300	300	<input checked="" type="checkbox"/>
SLICENSE		86400	86400	<input checked="" type="checkbox"/>
CM04		300	300	<input type="checkbox"/>

Return to main screen

The SLG1 filter is located in the menu Administrator → Metric filters → SLG1 filter

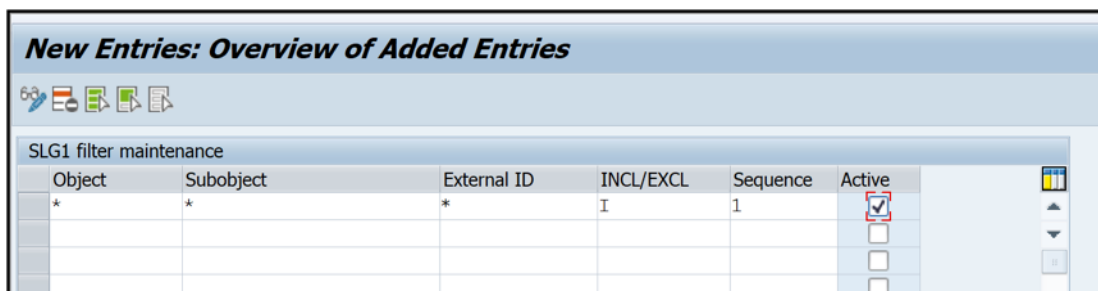


New Entries

Select "New Entries"

Add the following line and select active (the first is "I" for "Include" and the second is the number one):

* * * | 1



Select Save 

All SLG1 logs metrics will now be collected and sent to Splunk. If you would like to exclude specific logs from being collected please review KB 036 - PowerConnect SP10 SLG1 metric configuration